

**(1°) NOISE LOW**

It is recommended for coldest periods

( UPDATING )

**(2°) NOISE MEDIUM**

Recommended for summer seasons

Helps keep The lower working temperature engine oil



**(3°) NOISE HIGH**

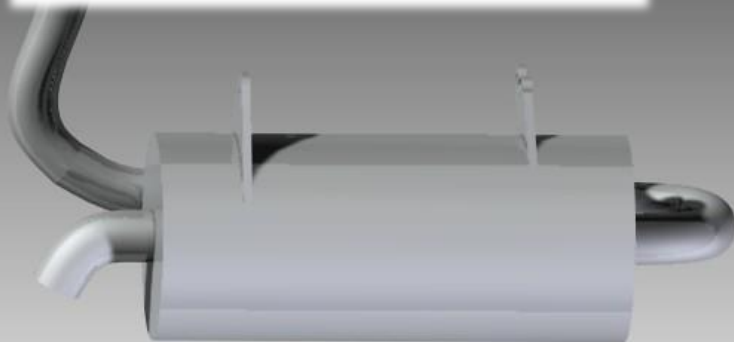
Recommended for summer seasons

Helps keep The lower working temperature engine oil



**Alternatively**

**Mod.X cod. 91011A**



**Round version**

**NOISE LOW**