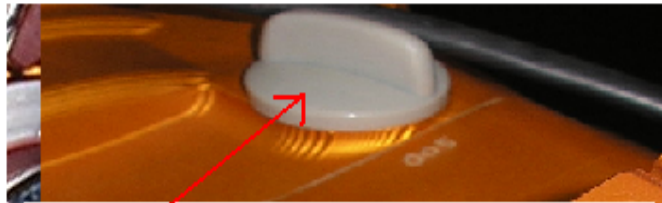


# ENGINE OIL REPLACEMENT

Make the oil replacement on cold engine. Unscrew the screw placed in the lower part of the front casing like the picture on fig.L., avoid contact with bare hands, it is harmful to health, it is irritating to the skin and harmful to the environment. Collect the oil that comes out in a container, wait till all comes out, or slightly tilt the engine in order to facilitate the operation. Tighten the screw with a copper washer, tightening torque 20 N.m. Introduce new engine oil, we recommend MOTUL 300V ESTER sae 15W50 for high environmental temperatures between +15° and +30° and sae 5W40 for low environmental temperatures between -15° and +15°, or alternatives that have characteristics like API SG/SH/SJ/SL/SM/SN synthetic. The quantity to pour is at least 600cc, afterwards reach the right level following the paragraph ENGINE OIL LEVEL CHECK.



Engine oil Introduction



Engine oil drain

The tightening torque 20 N.m

fig.L

Olio Motore Consigliato

Engine Oil Recommended



summer

API SG/SH/SJ/SL/SM/SN



wintery

Temperatures oil : ( Min. 60° )

(.Normal 100°/120°)

(.Max 160°)